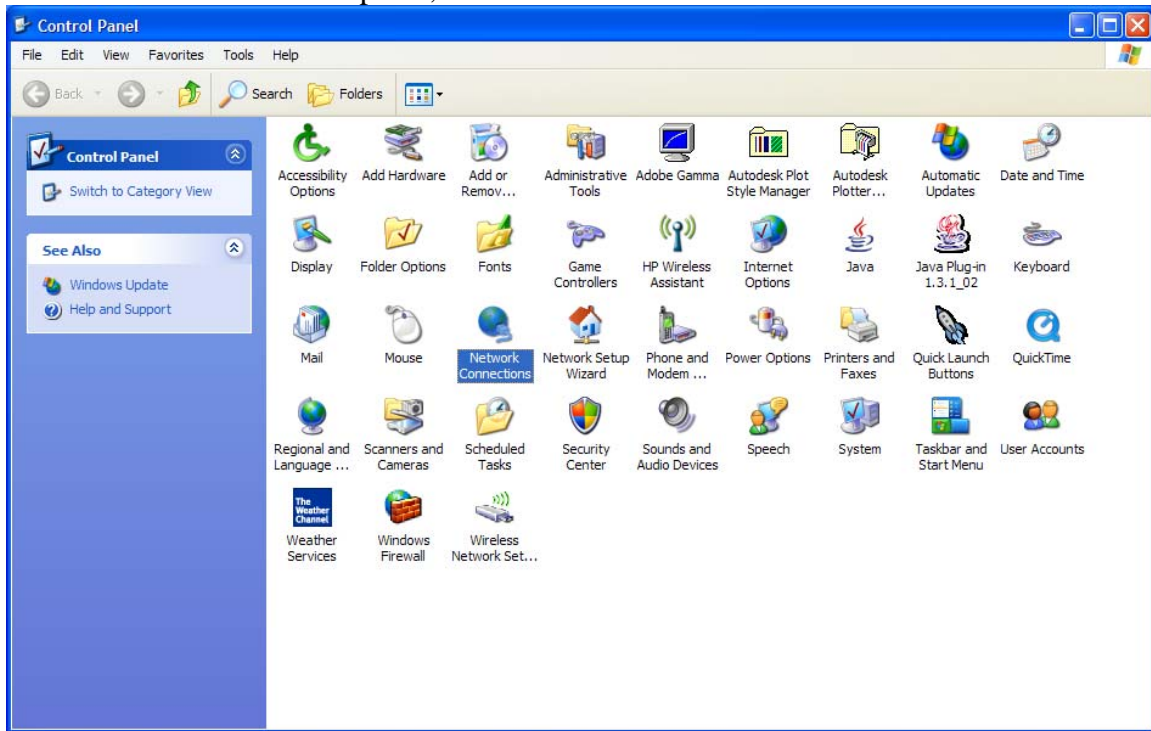
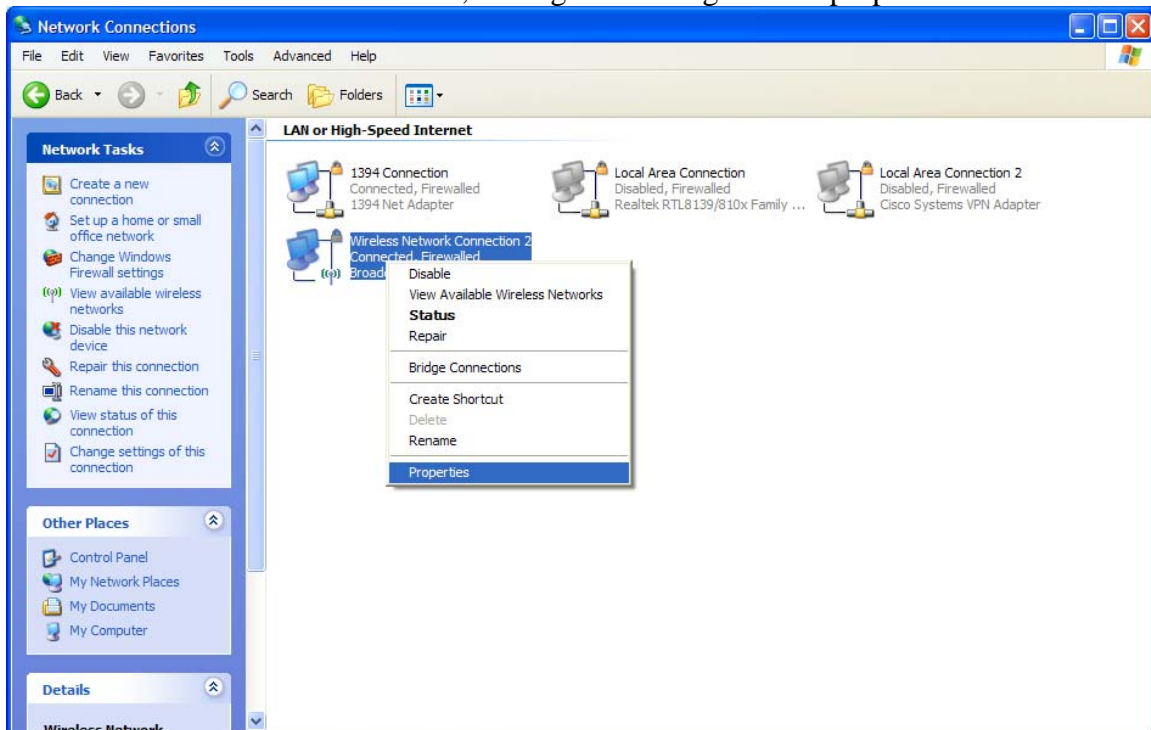


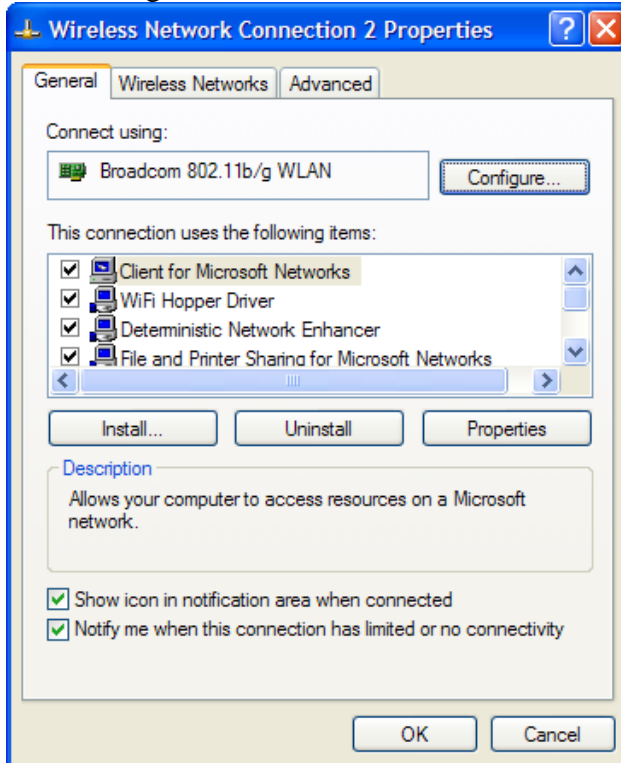
For students to have wireless access to the internet they must follow these directions. **This is a one time only setup. Once these settings are done, then you just login each day.** To setup a notebook to connect to the wireless network, first go to the **network connections** on the control panel, and double click the icon.



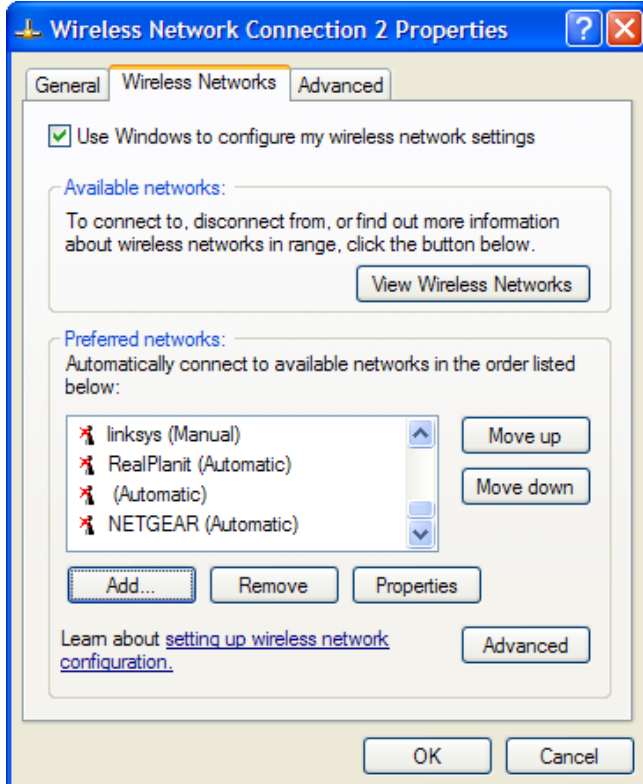
Then select the wireless connection, and right click to get to the properties.



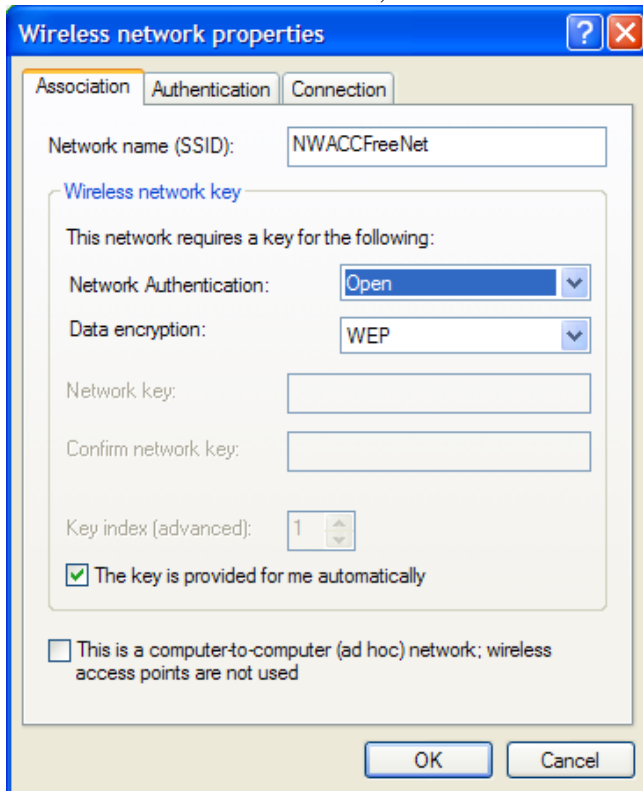
From here go to the wireless networks tab.



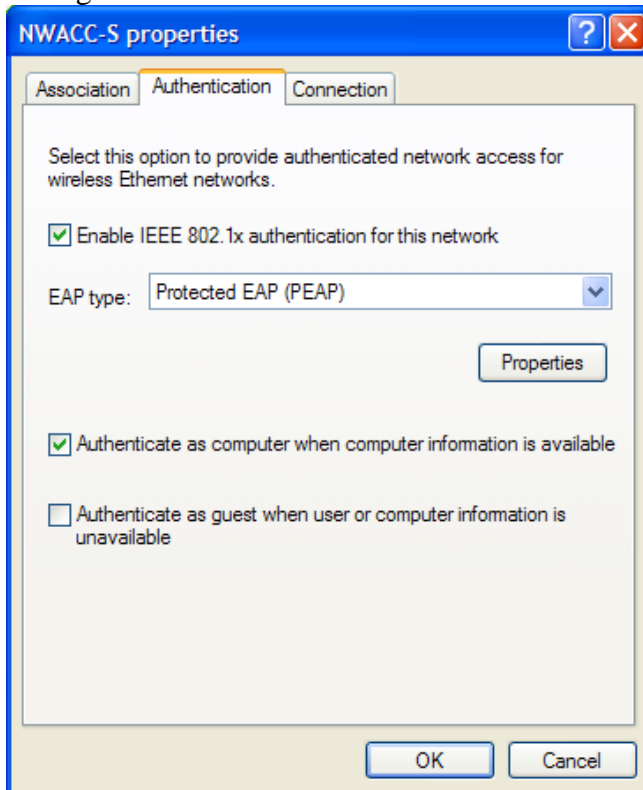
From this tab, add the network "NCACCFreeNet".



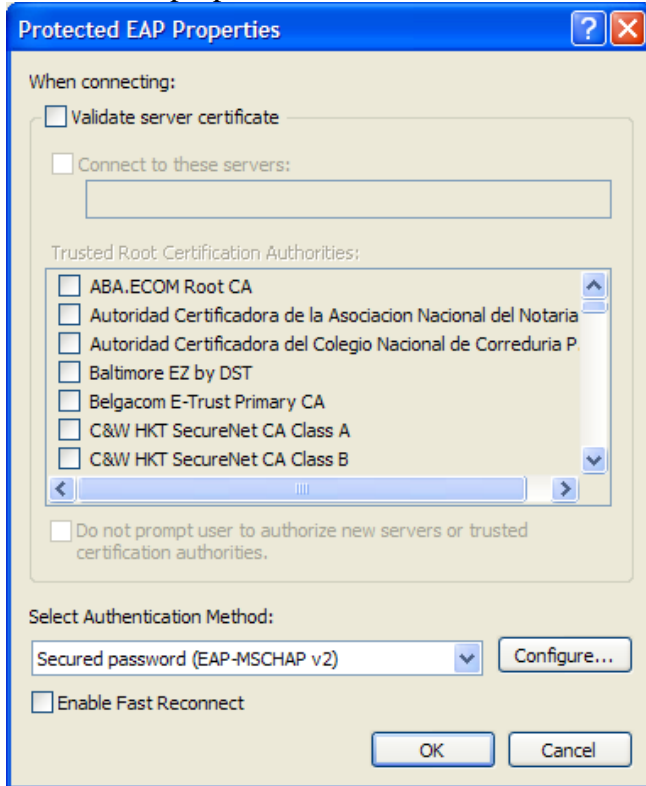
Here is what must be entered, then click OK



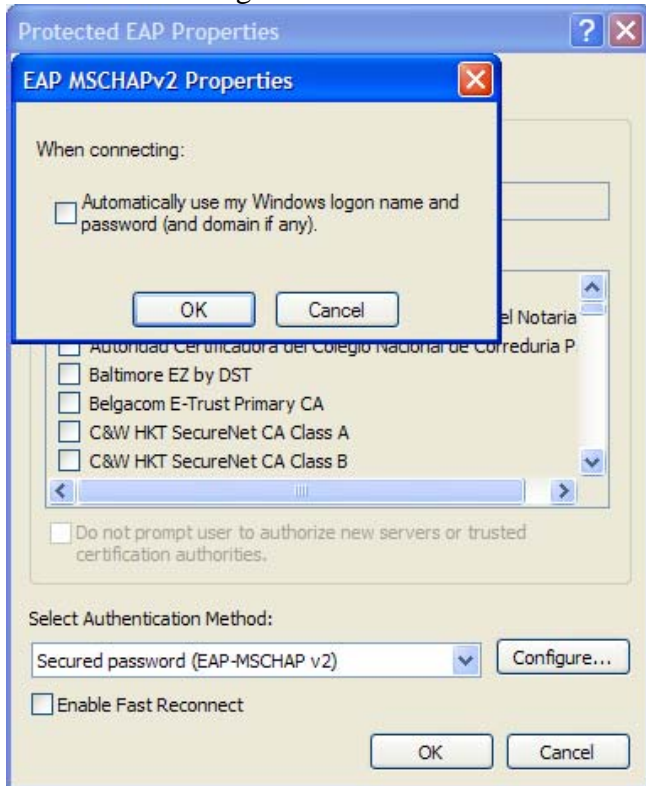
Now got to the authentication tab and make these changes.



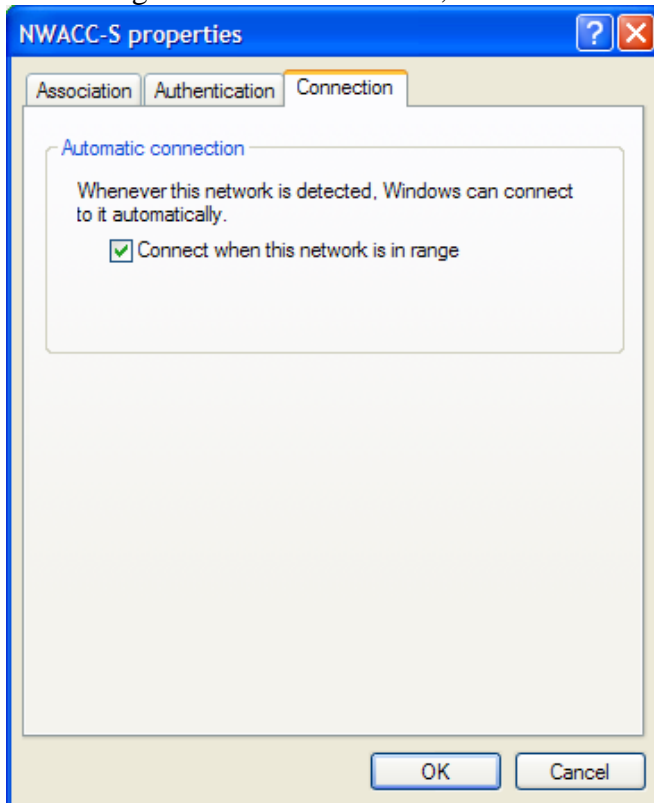
Click on the properties button and make these changes.



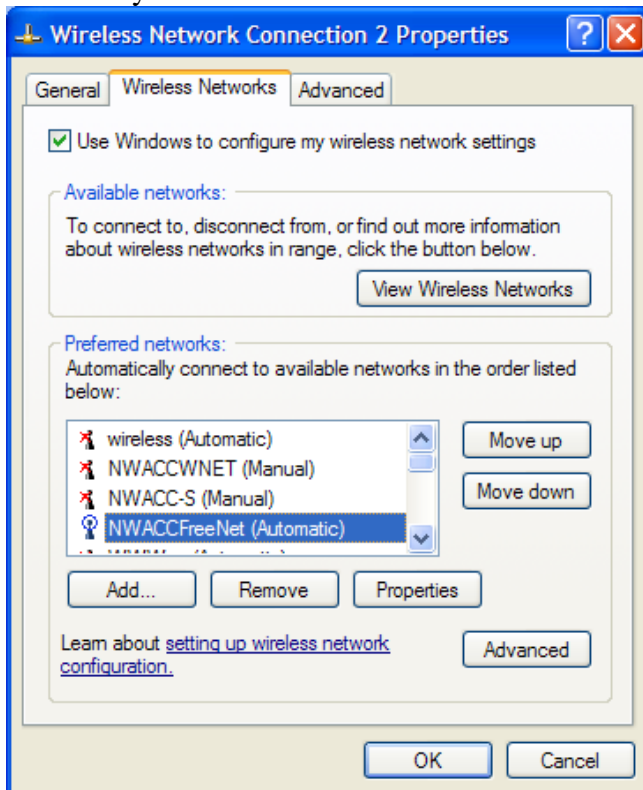
Click on the configure button and make these changes.



And now go to the connection tab, and make this change.

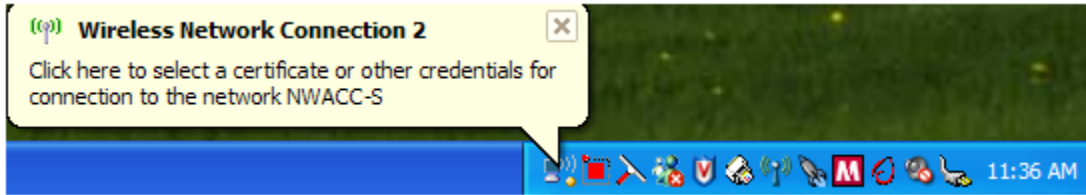


And now you will see this network listed.

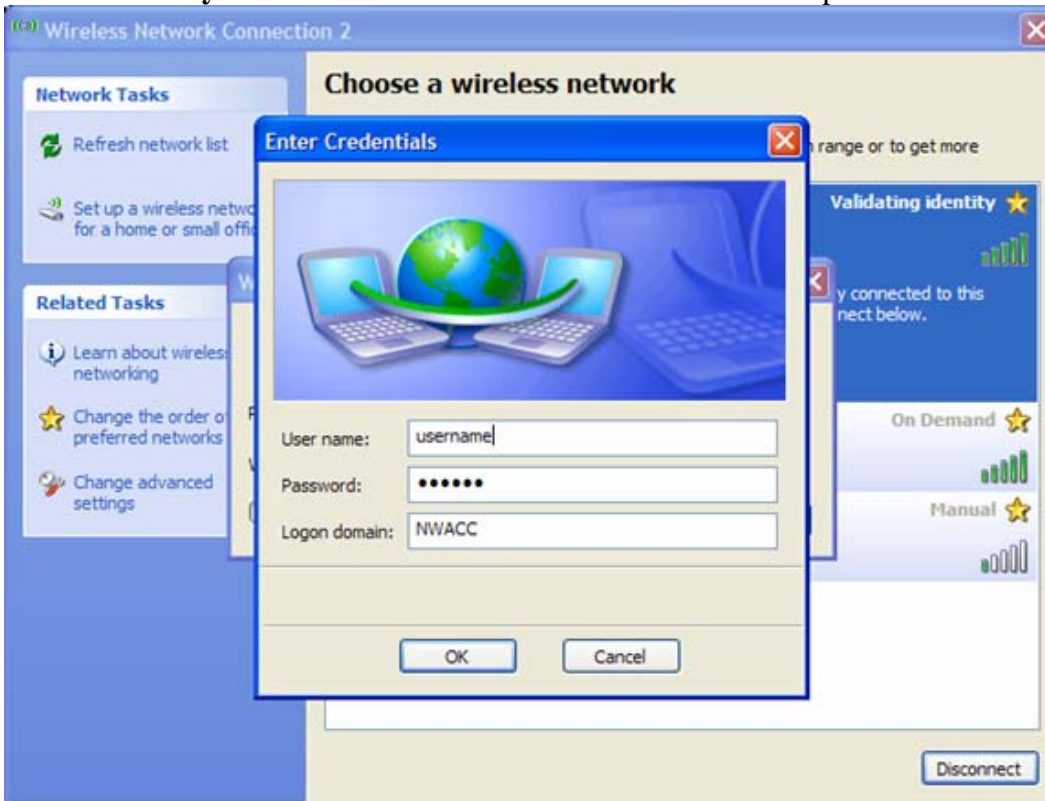


Now from the tool bar or control panel you can bring up the wireless networks, and connect to the one you want.

After clicking on the network to connect to, next click on the credentials bubble.



And here enter **your username** and **student id number** for the password.



And here you will now see that you are connected, and you can close this window.

